

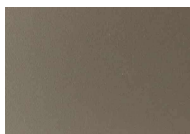


**DESCRIZIONE TECNICA / TECHNICAL DESCRIPTION**

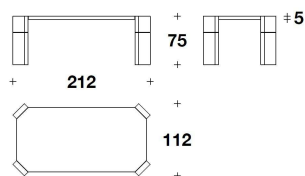
**GAMBE** Parte superiore in legno rigenerato con finitura Nero Selce  
Parte inferiore in legno rivestito in tessuto Futura  
Dettagli in acciaio finitura Light Nickel  
**PIANO** Legno rigenerato con finitura Nero Selce

**LEGS** Upper part in reclaimed wood with Black Selce finishing  
Lower part in wood covered with Futura fabric  
Steel details with Light Nickel finishing

**TOP** Reclaimed wood with Black Selce finishing



LIGHT NICKEL



TTV (42)

TAVOLO / TABLE

212x112x75H. - THK.5cm

83 1/3x44x29 2/3H. - THK.1 15/16"

**Note**