

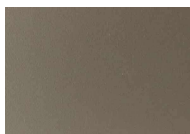


DESCRIZIONE TECNICA / TECHNICAL DESCRIPTION

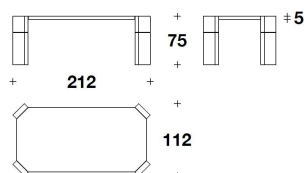
GAMBE Parte superiore in legno rigenerato con finitura Nero Selce
Parte inferiore in legno rivestito in tessuto Futura
Dettagli in acciaio finitura Light Nickel
PIANO Legno rigenerato con finitura Nero Selce

LEGS Upper part in reclaimed wood with Black Selce finishing
Lower part in wood covered with Futura fabric
Steel details with Light Nickel finishing

TOP Reclaimed wood with Black Selce finishing



LIGHT NICKEL



TTV (42)

TAVOLO / TABLE

212x112x75H. - THK.5cm

83 1/3x44x29 2/3H. - THK.1 15/16"

Note